

**LONDON AREA
WOMEN'S INSTITUTE**



94th ANNUAL CONVENTION

THEME;

"INTERNATIONAL YEAR OF THE POTATO"

**LOCATION
SOUTHWOLD KEYSTONE COMPLEX
35921 TALBOT LINE, SHEDDEN, ON
NOL 2E0**

519-764-2865

**TUESDAY
WEDNESDAY, OCTOBER 7th, 2008**

**MIDDLESEX EAST, MIDDLESEX NORTHWEST
ELGIN COUNTY**

**PERTH SOUTH, HURON SOUTH, HURON WEST
OXFORD DISTRICT**



London Area Women's Institute - The Officers 2008-2009

NOTE

PLEASE BRING THIS PROGRAM WITH YOU
Year-end reports will be available to all members

IMPORTANT

Each Branch and District Secretary is asked to order and
Pay for in advance the number of lunch tickets (9.00) and
Banquet tickets (16.00) required by your group.

Do not include anyone on the Area Executive or Convenors
Please include a list of the names of people purchasing the tickets.
Cost of Meal Tickets includes Area expenses for the Convention.

Please send a **STAMPED SELF-ADDRESSED ENVELOPE**

With your order and a cheque made payable to London Area

To: **Mrs. Margaret Ogar, Treasurer**
205 North Centre Rd.
Unit 15

London, Ontario N5X 4E2
519-645-1245 – by September 24th, 2008
If a Billet is needed – Pauline Lindsay
(519-631-5247)

Pauline.Lindsay@explornet.com

Please remember to bring your current membership card, as you will
need this in order to vote.

Each Branch is asked to bring **pre-priced** articles for
“Our Country Store” valued up to \$10.00

Lug your own Mug

District President is responsible for bringing the District Banner and
placing it ahead of time

Wear your name tag and Women’s Institute Badge
Map is on the back

LONDON AREA WOMEN’S INSTITUT E 2008 – 9

| | | | |
|------------------------------|-------------------|---|-------------------------|
| Past President | Glenna Ladell | R.R. #2 Ilderton NOM 2AO | 519-666-1418 |
| President | Anne Innes | R.R. #1 Embro NOJ 1JO | 519-475-4502 |
| 1 st V. President | Debbie Bauer | 37229 Dungannon Rd. R.R. #2 Auburn NOM 1EO | 519-529-7820 |
| Secretary | Sheila Greason | 6893 Cobble Hills Road R.R. #4 St. Marys N4X 1C7 | 519-349-2768 |
| Ass’t Secretary | Ilene Chesterman | R.R. #3 Tillsonburg N4G 4G8 | 519-842-8145 |
| Treasurer | Margaret Ogar | 205 North Centre Rd. Unit 15, London N5X 4E2 | 519-645-1245 |
| | | R.R. #2 Thamesford NOM 2MO | 519-283-6033 |
| Public Relations | Betty Archambault | 38845 Hullet-McKillop Line R.R. #1 Auburn NOM 1EO | 519-526-7234 |
| Ass’t Public Relations | Mabel Jacklin | Box 1643, 200 Frances St. Wingham NOG 2WO | 519-357-1455 |
| R.O.S.E./Education | Dianna Robinson | 39491 Nature Centre Rd. R.R. #1 Belgrave, NOG 1EO | 519-537-1452 |
| Assistant | Doreen Marks | Box 108, 1 Parker Dr. Belgrave NOG 1EO | 519-357-2088 |
| Advocacy Convenor | Glenna Ladell | R.R.#2 Ilderton NOM 2AO | 519-666-1418 |
| Tweedsmuir Curator | Mary Nicklas | Box 885, 103 Decew St. Tavistock, N)B 2RO | 519-655-9915 |
| Financial Examiner | Laura Green | 356508 35 th Line R.R. #1 Embro NOJ 1JO | 519-475-4690 |
| Financial Examiner | Vivian McDonald | 23560 23 rd Line R.R. #2 Thamesford NOM 2MO | 519-283-6369 |
| Scholarship Chair | Debbie Bauer | 37229 Dungannon Rd. R.R. #2 Auburn NOM 1EO | 519-529-7820 |
| Nominating Chair | Ruth Gourley | 6-140 McGarrell Rd. London, N6G 5J1 | 519-675-9779 |

PROVINCIAL BOARD DIRECTORS – SOUTHERN REGION

Barbara Ann Temple 54 Lakeview Ave. Grimsby L3M 3M2 905-945-1031
Ilene Chesterman 204171 Keswick Rd. R.R. #3 Tillsonburg N4G 4G8
519-842-8145

AREA VOTING DELEGATE

Ruth Gourley 6-140 McGarrell Rd. London, N6G 5J1 519-675-9779
ALTERNATE – Eleanor Williams 5786 Line 6 Blanshard
R.R. 6 St. Marys N4X 1C8 519-229-8200

APPOINTMENTS

Western Fair Marilyn Brady 5846 Cobble Hills Rd. R.R. #4 St. Marys N4X 1C7
519-461-0303
Western Fair Katherine McNaughton 14284 10 Mile Rd. R. R. #3 Ilderton NOM 2AO
519-666-0887
Children’s Hospital Donna Willows R.R. #2 St. Pauls NOK 1VO 519-393-6455

CONVENTION CHAIRS

2007 Perth South Doris Spence 5006 Line 6 R.R. #6 St. Marys N4X 1C8 519-229-6276
2008 Elgin Joan Mansell 44150 Ferguson Line R.R. #8 St. Thomas N5P 3T3 519-631-1623
2009 Oxford Sheila Greason, R.R. #4 St. Marys N4X 1C7 519-349-2768

**PROGRAM FOR 2008
LONDON AREA CONVENTION
WEDNESDAY, A.M. OCTOBER 3
CHAIR: ANNE INNES**

District delegate please pick up District Information Package

Associated Country Women of the World memberships are available in the morning and at noon.

Bring your name, address and membership number.

Federated News subscriptions are also available

Pay by **cheque** only (separate cheques)

ACWW memberships (\$40.00)

Federated News (\$.5.00)

8:45 a.m. Registration: Secretaries of the 7 Districts,
Reception: Joan Mansell

Coffee Hour: Shedden, Middlemarach, Paynes Mills

9:25 a.m. Time to Sing: Pianist, Shirley Walker – West Lorne

Song Leader- Gwen McLain (West Lorne)

Presentation of Flags – Eleanor Williams, Glenna Ladell

Sing: O Canada

Institute Ode

Mary Stewart Collect

Welcome: Elgin President- Grace Campbell

How to vote

In Memoriam: Kingsmill-Mapleton

Acceptance of Minutes of 2007 Convention

Financial Report: Margaret Ogar

Financial Examiners' Report: Vivian McDonald, Laura Green

Correspondence

Roll Call: Responsibility of 7 District Presidents ^{of}

Each President is to give a 2-minute summary twinning in her district 2007-2008

President's Address: Anne Innes

CHAIR: DEBBIE BAUER

Lite and Lively: Helen Van Brenk- Wallacetown

F.W.I.O. President: Joy Trimbell

Nomination of Area Voting Delegate and Alternate

Introduce Nominees: Provincial Board Director for Southern Region

Collection: Cowal, Crinan

Adelaide Hoodless Presentation:

Comments on Displays: Lois Woolner and Marie Spence- Clachan Branch

Provincial Conference – Anne Innes

Announcements: Debbie Bauer

12: p.m. Sing Institute Grace

Adjourn for Lunch catered by Fingal U.C.W.

Country Store: Clachan, River Road Branches, Yarmouth Glen

**AFTERNOON SESSION
CHAIR: Glenna Ladell**

1:30 p.m. Hymn of All Nations

Greetings from visiting Area Presidents: Southwestern, Guelph,
Grey- Bruce

F. Y.I. Mavis Bedford – Dog Guides of Canada

Lite & Lively – Wallacetown

Lucy Ogletree – Water Purification in Sudan

Reports: ALL PRINTED – PLEASE READ

Convenors: 2-Minute Reports

Advocacy Convenor: Glenna Ladell

R.O.S.E. Coordinator: Dianna Robinson

Doreen Marks

Public Relations: Betty Archambault

Mabel Jacklin

Tweedsmuir Curator: Mary Nicklas

Children's Hospital: Donna Willows

Western Fair Association: Katherine McNaughton,

Marlyn Brady

Potato Skit – Donna Lord - Middlemarch

BREAK

Time to Sing: West Lorne

CHAIR: ANNE INNES

Area Voting Delegate:

Ruth Gourley

Provincial Board Directors:

Barbara Ann Temple

Ilene Chesterman

Treasurer's Report of Convention:

Margaret Ogar

Election of Officers:

Joy Trimbell

New Business

Invitation for Convention 2009 and Courtesies: Carol Innes

Announcements

Head Table Guests:

Ilene Chesterman

**BANQUET
CATERED BY FINGAL U.C.W.**

October 7, 2008
5:30 p.m.

PIPER: Caitlin Simpson

CHAIR: ANNE INNES

WOMEN'S INSTITUTE GRACE

TOAST TO THE WOMEN'S INSTITUTE

INTRODUCTION OF HEAD TABLE GUESTS: Ilene Chesterman

GREETINGS: Warden of Elgin County – Jim McIntyre

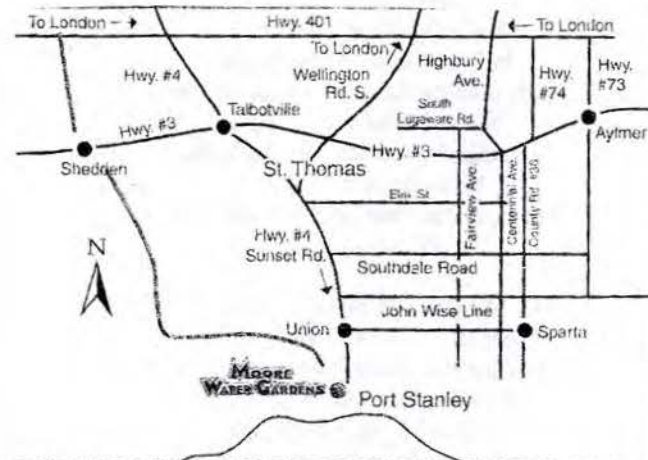
Presentation of Scholarships – Debbie Bauer

ENTERTAINMENT – West Elgin Choral Society – Director John Holland
PRESENTATIONS – Anne Innes

CLOSING CEREMONY: RETIRE FLAGS

SING: ROYAL ANTHEM

2008 LONDON AREA CONVENTION DECLARED CLOSED



NOTES



HOSTING CONVENTION: Oct 9th 2008
 The Elgin District Women's Institute hosted the 94th annual convention Tuesday at the Keystone Complex in Shedden. Shown from left are Grace Campbell, president Elgin District; Marion McKenzie, PRO for District; Joy Trimble, president Federation of Women's Institute of Ontario; Anne Innes, president London Area; and Joan Mansell, chairman of conference. (T-J photo by Robert Chaulk)



ANNE INNES

GRACE Campbell.

Joy Trimble

GIENNA LADELL.

DEBBIE BAUER.

Wallacetown WI MEMBER
 Lite & Lively by Kathy Minnema.



DEBBIE BAUER.



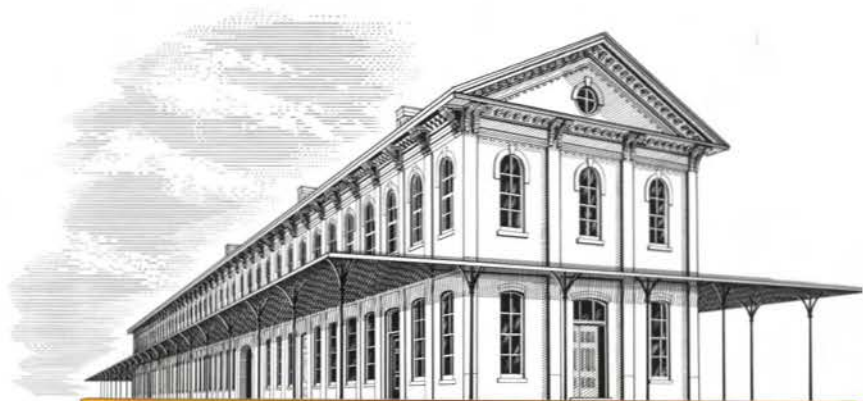
SALLY M'INTYRE

HELEN VAN BRENK.

Patato SKit - by Middiemarch W.I.



1. PAT ZEGERS 2. DONNA LORD, 3. MARG CARROLL 4. CAROLE TEMPLE,
 5. SUELL A MONTEITH, 6. Lois Kruppe 7. ZELIANOR LYLE, 8. JOANNE ERICKSON,



CANADA SOUTHERN

RAILWAY STATION
ST. THOMAS • ONTARIO • CANADA

*Recognizing, Honouring
and Preserving
Our Railway Heritage*

OUR STATION • OUR HERITAGE • OUR FUTURE

OUR STATION

OUR MISSION

To Preserve and Honour Railway Heritage in North America and ensure the future sustainability of the Canada Southern Railway Station.

OUR VISION

Recognizing, Honouring and Preserving Our Railway Heritage.

WHAT IS THE NORTH AMERICA RAILWAY HALL OF FAME?

The North America Railway Hall of Fame is a registered charitable organization committed to preserving railway heritage in St. Thomas and ensuring the future sustainability of the Canada Southern Railway Station (CASO).

WHO OWNS THE CASO STATION?

The station is owned by the North America Railway Hall of Fame.

WHERE DOES FUNDING FOR STAFF AND IMPROVEMENTS AT THE STATION COME FROM?

Funding for the Hall of Fame and the redevelopment of the station comes from a variety of sources. Much of the funding for the staff is provided through a partnership with the Ontario Ministry of Training, Colleges and Universities through the Job Creation Program.

Other partnerships have included the Ontario Trillium Foundation, Ontario Heritage Trust and Alcoa Fujikura. Our greatest support has been the residents of Elgin County and others nationwide interested in preserving this truly historic station.

THE NORTH AMERICA RAILWAY HALL OF FAME WOULD LIKE TO...

- Restore and reconstruct the Canada Southern Railway Station as a significant aspect of our history and community heritage, providing for a revitalization of the downtown by creating a focal point for a viable tourist industry and business district.
- Collect and display station artifacts in a room decorated as it would have been at the height of the railway boom years.
- Recognize and establish an enduring tribute to men and women of the past and present who have made significant contributions relating to the railway industry in North America.
- Honour significant railway organizations, innovations and technical accomplishments, rolling stock, buildings and other construction feats, cultural contributions and historical railway events.
- Provide a facility for the preservation and display of a collection of library materials and heritage artifacts related to the Hall of Fame inductees.
- Educate the public about the impact of railway transportation on the history and the continuing development of communities throughout North America.



OUR HERITAGE

St. Thomas has been associated with the railway industry since 1856. Between 1871 and 1873, the Canada Southern Railway was established providing a direct route between Detroit and Buffalo. By 1910, six railway companies were operating in St. Thomas. The magnificent 354 ft. long CASO station and head office secured St. Thomas' reputation as The Railway Capital of Canada and stood as a unique monument with its intricate Italianate architecture and craftsmanship. The only existing building of its kind in Canada, this station is now protected by a Provincial Heritage Easement and was designated as one of the first six railway stations in Canada under the Heritage Railway Stations Protection Act by the Federal Government. Adjacent rail shops contain

the Elgin County Railway Museum and the Southern Ontario Locomotive Restoration Society.



Photo Courtesy of Elgin Military Museum



Photo Courtesy of Elgin County Archives



Courtesy www.canadasouthern.com



Photo Courtesy of Elgin County Archives

In spite of experiencing years of neglect, the Canada Southern Station retains a number of original architectural features and decorative elements. The dining room with its cast iron columns and window shutters is 79 feet in length and evokes an era of elegance when passengers enjoyed a break en route to further destinations. Guests included Queen Victoria's eldest son Arthur, who was also Governor General, Lucille Ball, W. C. Fields, big band leaders, baseball teams such as the New York Yankees and their star Babe Ruth, and vaudeville performers. They were served by waitresses who lived in bedrooms on the second floor of the station.

Not unlike luxury ocean liners, the station offered a variety of services in addition to public

transportation - barber, doctor, news agent, mail and baggage, telegraph, police and library.

The classical support column capitals in the dining and waiting rooms are decorated with lead acanthus leaves and cast iron Graeco-Roman goddess heads. The ticket office has its original lettered window and grill. Upstairs were the elegantly appointed headquarters of the Canada Southern Railway with a palatial corridor running much of the length of the building.



OUR SUCCESSES

ADOPT-A-WINDOW CAMPAIGN



There are more than 161 windows in this majestic building. To raise money for their restoration, we announced an Adopt-A-Window program in which windows were sponsored for \$500 for a half and \$1,000 for a full window. We are proud to announce that all windows have now been adopted

by individuals, businesses and organizations both locally and internationally, making this a successful fundraising campaign.

ADOPT-A-DOORWAY CAMPAIGN



There are 19 exterior doorways to be restored. These magnificent double doorways are 12 feet high and 5 feet wide. Their restoration was funded through a \$2,500 sponsorship. A limited number of interior doors are available

for adoption. Donors receive a charitable tax receipt in the full amount, a lifetime membership to the Hall of Fame and a plaque in recognition of their support.

MEMBERSHIP DRIVE

Currently we have more than 400 members and new members are welcome. For \$25, donors receive a membership card, quarterly newsletter, and charitable tax receipt, as well as updates and invitations to station events.

ONTARIO MINISTRY OF TRAINING, COLLEGES AND UNIVERSITIES – ONTARIO JOB CREATION PROGRAM

In the initial year of application, the Ontario Job Creation program provided a grant to the Hall of Fame which enabled the hiring of 12 full-time staff. Work areas included construction, general administration, historical research and tour coordination, tourism, special events and business development. This program has been renewed for the years 2007-2008, allowing the organization to continue the program with another group of staff and an additional \$132,000.



THE ONTARIO TRILLIUM FOUNDATION

LA FONDATION TRILLIUM DE L'ONTARIO

ONTARIO TRILLIUM FOUNDATION

The Ontario Trillium Foundation has been instrumental with its financial support. The grants over the past few years have helped our organization proceed with three major projects.

- A feasibility study
- A new roof
- The hiring of an Executive Director



ONTARIO HERITAGE TRUST

The Ontario Heritage Foundation has provided a grant of \$25,000 towards the cost of repairing and restoring the original eaves, gutters and fascia.

ALCOA FUJIKURA

Alcoa, a local company, has provided a grant of \$25,000 towards the cost of repairing and restoring the original eaves, gutters and fascia as well as the recent purchase of a zoom boom. This allowed us to continue with the restoration of the second floor windows as well as the eaves, gutters and fascia.

INNOVATION TEAM

An innovation team was funded by the Ontario Ministry of Agriculture, Food and Rural Affairs, the City of St. Thomas, and North America Railway Hall of Fame. This report was prepared by six consultants from across Canada who have expertise in building restoration projects. This plan is now in the hands of City Council, and the 14 steps outlined within the report are in the development stage.

IVEY SCHOOL OF BUSINESS

The station project partnered with four graduate students of the Ivey School of Business MBA program. This report focused primarily on action items, providing specific recommendations on how to ready the building for full operation. The methodology used for this report is based on interviews with industry experts, comparable analysis and secondary research. This is an invaluable and up-to-date resource for our organization.

FEASIBILITY STUDY

A feasibility study was conducted by Commonwealth Resource Management of Perth, Ontario. This company was selected from a number of leading heritage restoration consultants from across North America. This study was completed in 2004 and has been the blueprint for restoration planning.

ARCHITECTURAL DESIGN AND CONSULTATION

SJMA is a local design firm headed by Ed Vandermaarel and Stephen Mawdsley. They have prepared detailed architectural drawings, site plans, elevations and floor plans. They also constructed a conceptual model of the station. This organization continues to be our representative for the establishment of a heritage master plan to be completed by the end of 2008.



OUR FUTURE

The vision for the Canada Southern Railway Station is of a dynamic, highly visited, beautifully restored Station, functioning as a catalyst to St. Thomas' overall downtown revitalization.

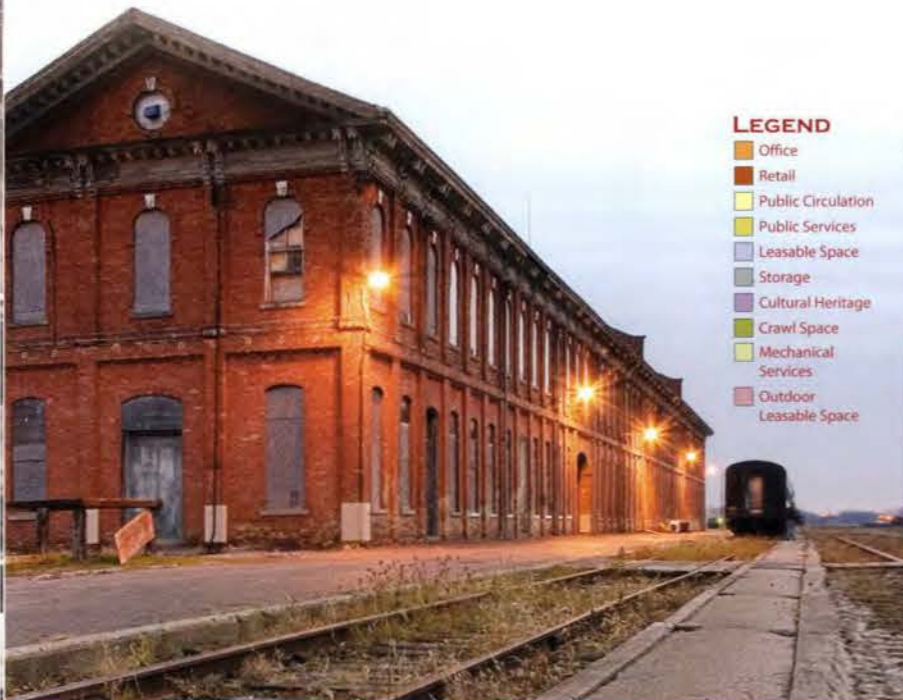
In five years, we see thousands of people coming to admire this unique historic structure restored to the majesty of this former corporate headquarters. Exterior features have been restored to their original condition, which will include the platform canopy surrounding the building.

The station will become the centre of activity where residents and visitors take part in a range of activities. As they wait in the restored waiting room, they will view with interest displays and artifacts on the history of the station. With their interest piqued, they can take the time to study North America wide railway history at the Railway Hall of Fame.

The Canada Southern Railway Station's architecture and history provide the basis for marketing the Station as a unique, prestigious heritage property. The CASO Station is virtually a horizontal "skyscraper", and its size and design give the building an aura and dominating presence in St. Thomas' downtown. The Station's profile in the community has certainly been altered by the loss of passenger service. The loss of the landscaped garden square, which was a visible feature on the north side of the Station property facing Talbot Street, also disconnected the Station from the commercial core area. However, the CASO Station, once restored, will live on for generations as a signature landmark in downtown St. Thomas. It has the potential to be marketed as a "prestigious business address" for businesses, or organizations operating from the restored facility.

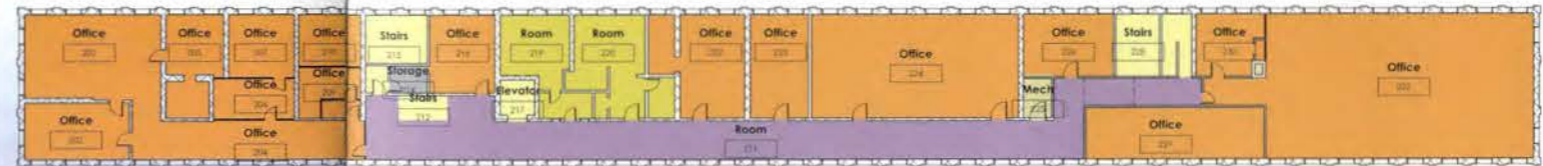
The Canada Southern Railway Station is the obvious choice to be the engine for change in the downtown. St. Thomas is a healthy community with a solid industrial base. The downtown core along with the station are important centres for business and social activity. The station is also a key destination for visitors to the region.

*A Prestigious
Business Address
In The Heart
Of St. Thomas*

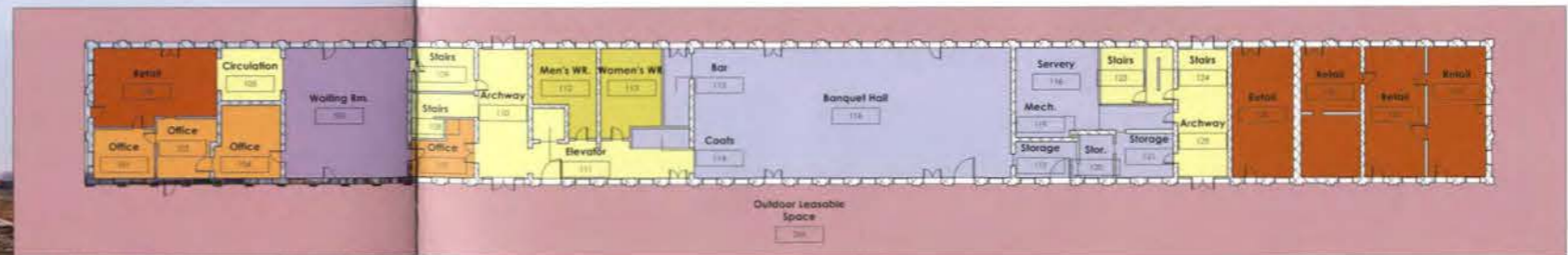


LEGEND

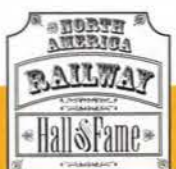
- Office
- Retail
- Public Circulation
- Public Services
- Leasable Space
- Storage
- Cultural Heritage
- Crawl Space
- Mechanical Services
- Outdoor Leasable Space



SECOND FLOOR



FIRST FLOOR



WE NEED YOUR HELP

BE A PART OF HISTORY AND HELP RAISE \$1.5 MILLION TO OPEN THE CANADA SOUTHERN RAILWAY STATION

| | |
|--|--------------------|
| <i>Municipal, Provincial & Federal Governments</i> | <i>\$500,000</i> |
| <i>Business and Service Clubs</i> | <i>\$500,000</i> |
| <i>Private Donations</i> | <i>\$500,000</i> |
| Total | \$1,500,000 |

By supporting the Station you have the unique opportunity to preserve a valuable piece of history and heritage, while creating a unique tourist destination. Your kindness will also play an integral part in the redevelopment of downtown St. Thomas.

Thank you to all of those who have already pledged their support to the CASO station project.



TO DONATE

Every donation toward the campaign will receive a charitable tax receipt. In addition to individual donations, you may want to become involved as a volunteer or maybe you have some photos or artifacts that could be displayed at the station? If so, we would like to hear from you. Please fill out the convenient donor form or membership/volunteer form. Be a part of history in the making!

The Canada Southern Railway Station is located at 750 Talbot Street, St. Thomas, Ontario. Our construction crew is working diligently to restore

the station from 8:30 a.m. to 4:00 p.m. Monday through Friday. Come by and see our progress!

Offices are staffed between the hours of 9:00 a.m. and 4:30 p.m. Monday through Friday. Many volunteer opportunities are available. Please call the office at 519-633-2535 or email info@narhf.org.

Tours and special event bookings are always available. Please call for hours or set up an appointment.

YES! I WANT TO BE A PART OF HISTORY - I WANT TO CONTRIBUTE!



NAME: _____

ADDRESS: _____

CITY: _____ PROV: _____

POSTAL CODE: _____ PHONE: _____

EMAIL: _____

MASTERCARD VISA AMERICAN EXPRESS

Card #: _____ / _____ / _____ / _____

Expiry: _____ / _____

Signature: _____

Charitable Registration Number 86722 8132 RR0001

- \$500
- \$100
- \$50
- \$25
- OTHER \$ _____

Please make cheques payable to North America Railway Hall of Fame.

- All donations are tax deductible. However to reduce administrative costs, receipts will only be issued for donations of \$25 or more unless requested by checking here.

